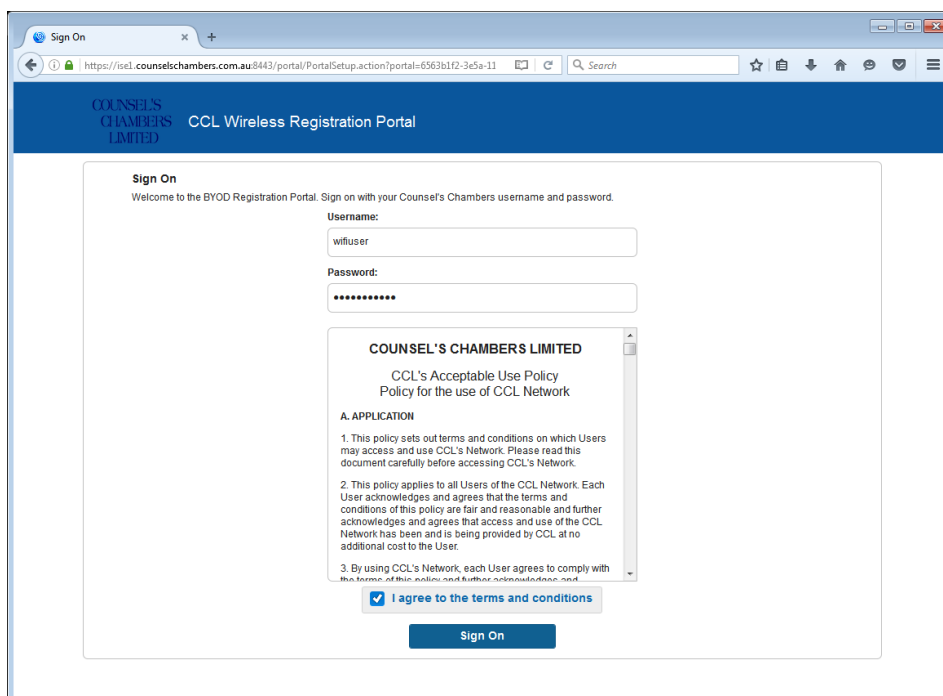


Counsel's Chambers Limited Network Device Connection – macOS Wireless

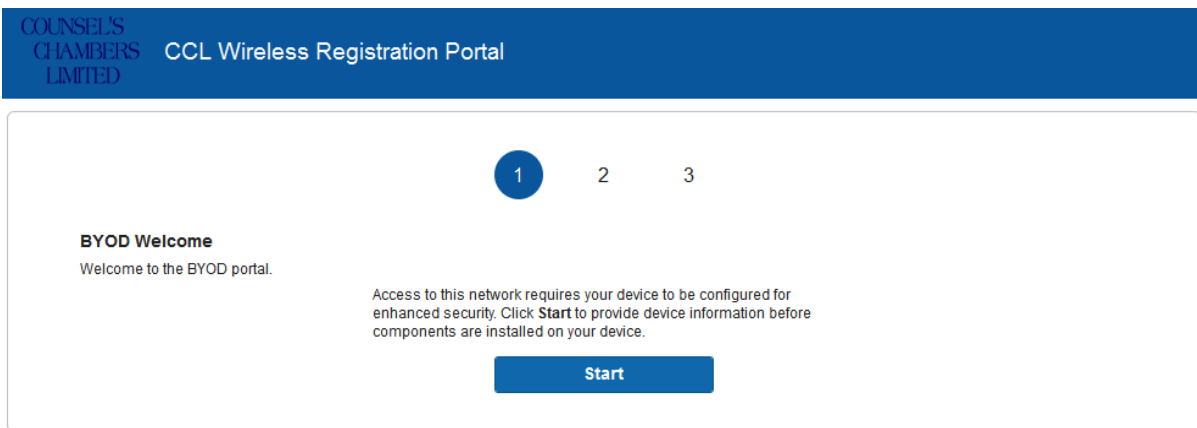
1. Connect to the **CCL-Connect** Wireless network.



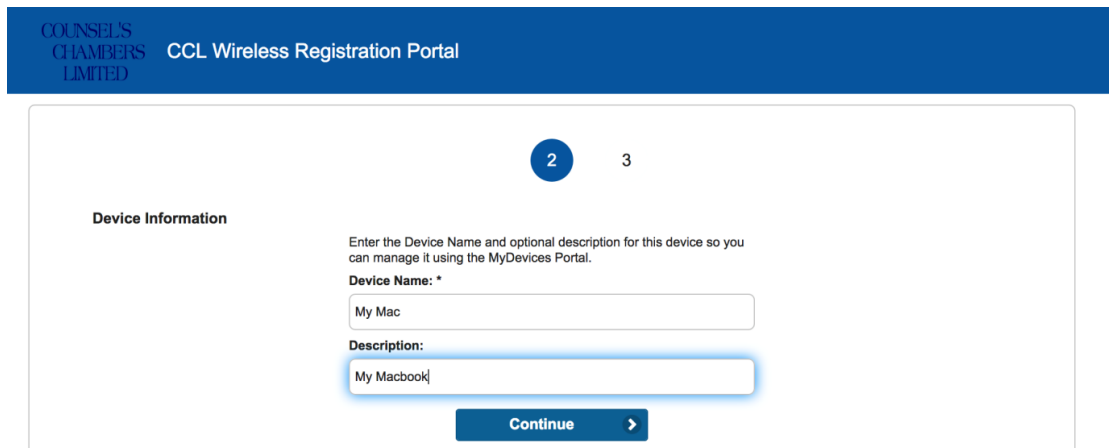
2. Open a browser (Firefox/Safari/Chrome) and browse to any website or www.ccl.com.au. You will be redirected to the login screen **CCL Wireless Registration Portal**.
3. Login with your CCL Network username and password. If you do not know your password contact CCL support on 9221 6235 or email support@counselschambers.com.au.



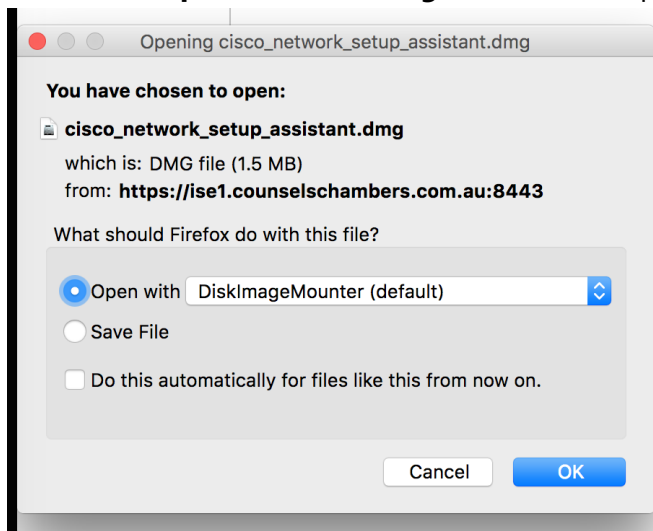
4. Press the **Start** button.



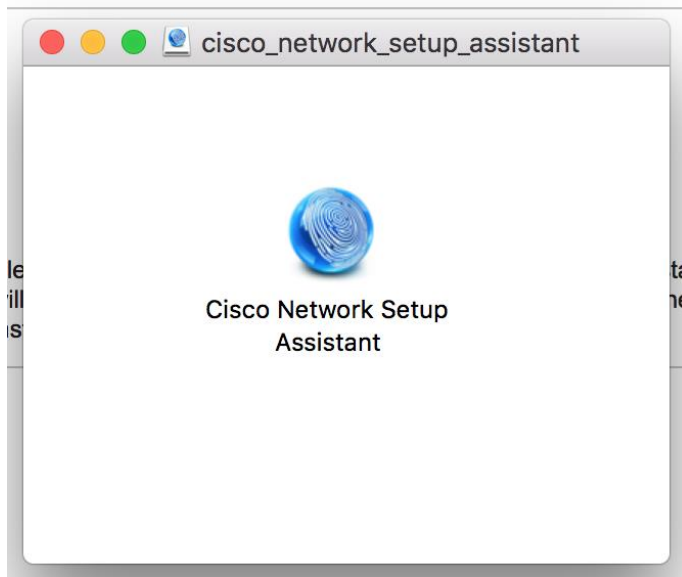
5. Enter a name and description for your computer.



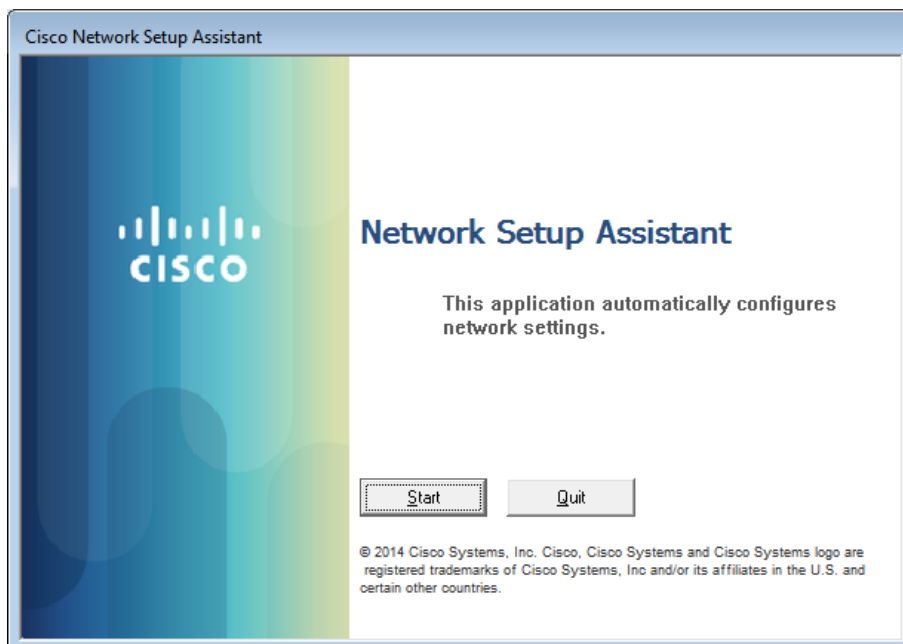
6. You will be prompted to download and run the **cisco_network_setup_assistant.dmg** tool. Select **Open with DiskImageMounter** and press **OK**.



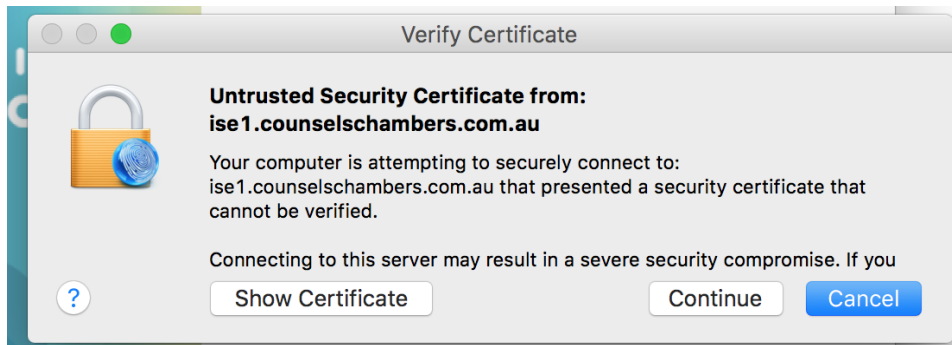
7. Run the **Cisco Network Setup Assistant**



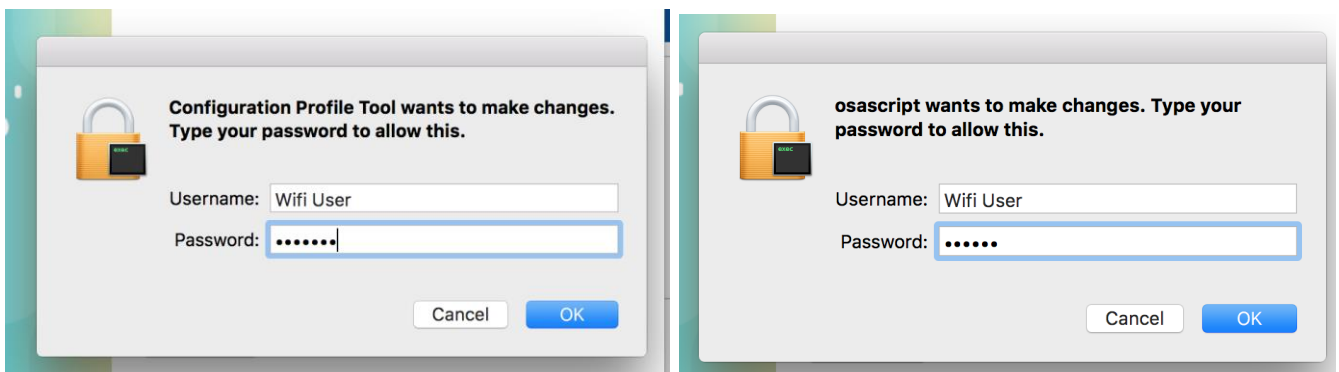
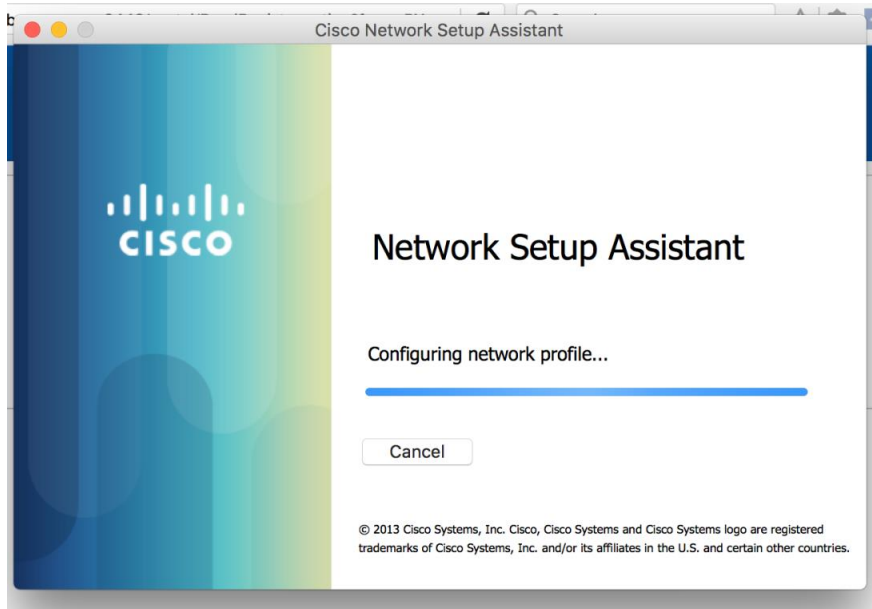
8. The **Cisco Network Setup Assistant** program will open. You may be warned that the application was downloaded from the internet, select **Open**. Press **Start**.



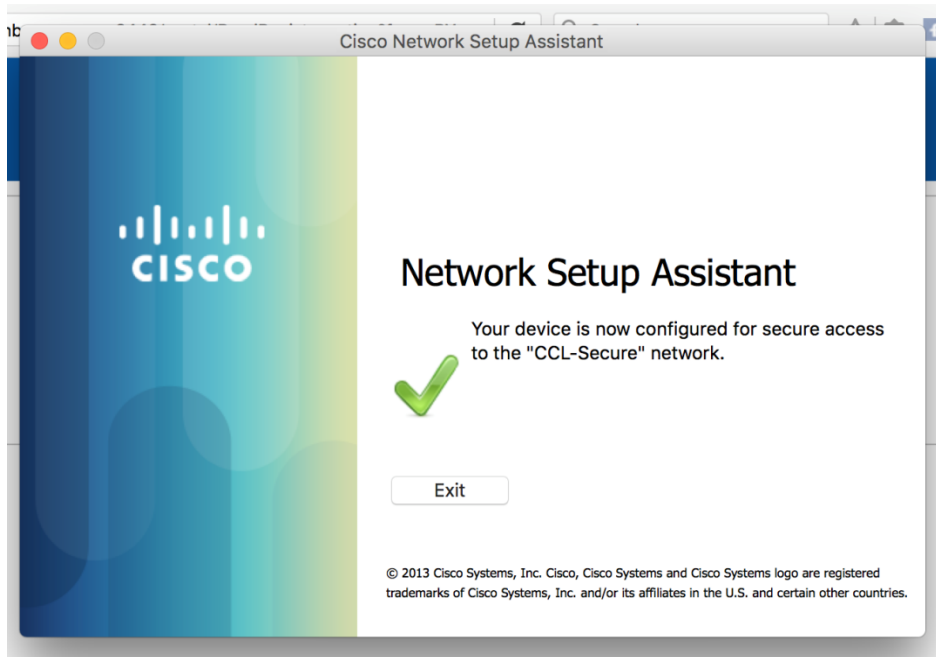
9. You will be prompted to install the **ise1.counselschambers.com.au** security certificate. Press **Continue**.



10. You will be prompted for your Username and Password two times. Enter the username and password for your local computer account



11. Your device is now able to connect to the **CCL-Secure** Wireless network.



12. The connection is complete, and your computer will automatically connect to the **CCL-Secure** wireless network.

