

Network Device Connection – Windows 10

1. Open a browser (Firefox/Chrome/IE) and browse to www.ccl.com.au. You will be redirected to the login screen **CCL Device Registration Portal**.
2. Login with your CCL Network username and password. If you do not know your password contact CCL support on 9221 6235 or email support@ccl.com.au.

The screenshot shows the 'Sign On' page of the CCL Device Registration Portal. At the top left is the COUNSEL'S CHAMBERS LIMITED logo. The page title is 'Device Registration'. Below the header, the text reads 'Sign On' and 'Welcome to the CCL Network Device Registration Portal. Sign on with your Counsel's Chambers username and password.' There are two input fields: 'Username:' with the text 'Macbook User' and 'Password:' with masked characters '*****'. Below these fields is a box containing the 'COUNSEL'S CHAMBERS LIMITED' logo and the text 'CCL's Acceptable Use Policy Policy for the use of CCL Network'. Underneath is section 'A. APPLICATION' with three numbered points. At the bottom of the policy box is a checkbox labeled 'I agree to the terms and conditions' which is checked. Below the policy box is a blue 'Sign On' button.

3. Press the **Start** button.

The screenshot shows the 'BYOD Welcome' screen. At the top left is the COUNSEL'S CHAMBERS LIMITED logo and the text 'Device Registration'. Below the header is a progress indicator with three steps: 1 (highlighted in blue), 2, and 3. The text reads 'BYOD Welcome' and 'Welcome to the BYOD portal.' Below this is a paragraph: 'Access to this network requires your device to be configured for enhanced security. Click Start to provide device information before components are installed on your device.' At the bottom is a blue 'Start' button.

4. Enter a **Device Name** such as “iMac” or “Windows Desktop”. A description is optional.

COUNSEL'S CHAMBERS LIMITED **Device Registration**

✓ — 2 — 3

Device Information

Enter the Device Name and optional description for this device so you can manage it using the MyDevices Portal.

Device Name: *

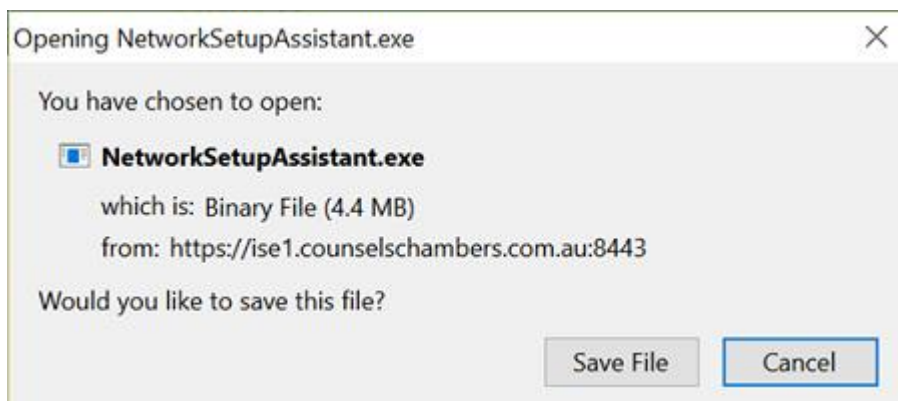
User Macbook

Description:

Macbook Model

Continue >

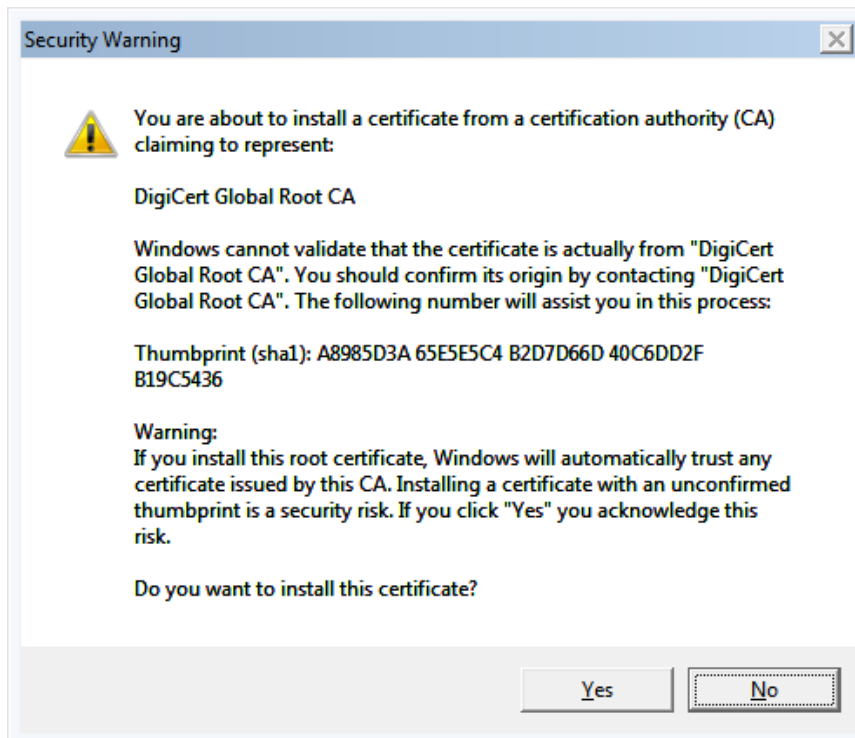
5. You will be prompted to download the **NetworkSetupAssistant.exe** file. Save and run the file.



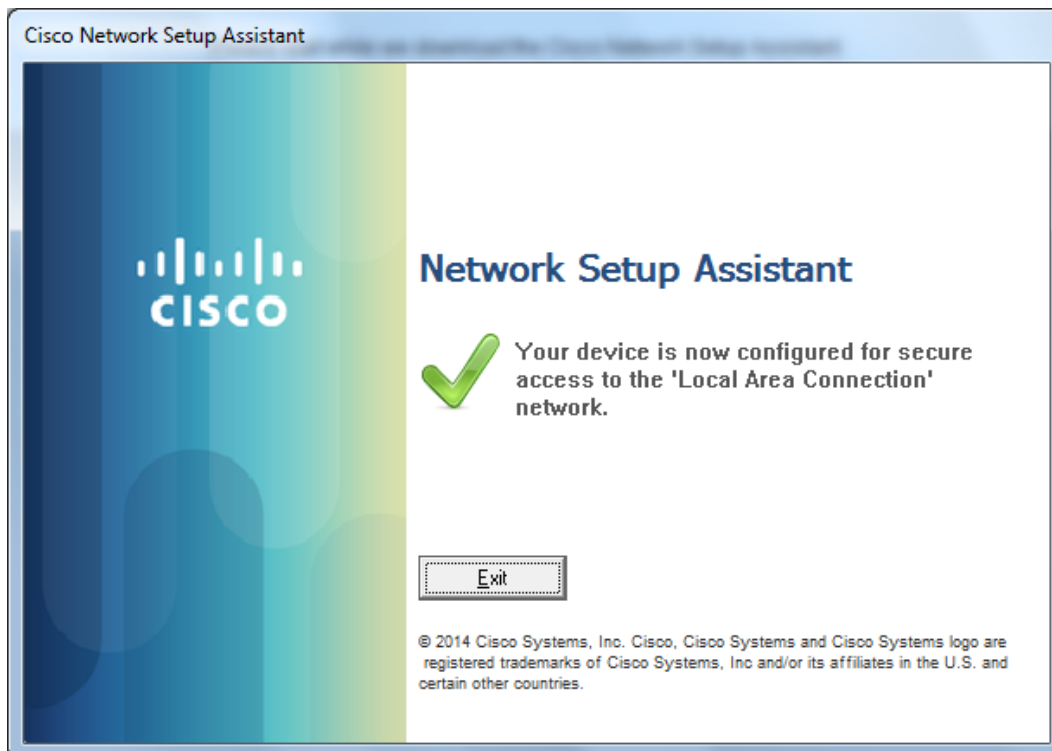
6. You may be prompted with a Smart Screen warning, which you should click **Run**. The **Cisco Network Setup Assistant** program will open. Press **Start**.



- You will be prompted to install the **DigiCert Global Root CA** security certificate. For added security, check that the Thumbprint (SHA1) matches the one in the image below. Press **Yes**.



- Your device is now able to connect to the CCL network.



- The connection is complete, and your computer will automatically connect to the network.

