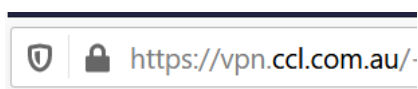


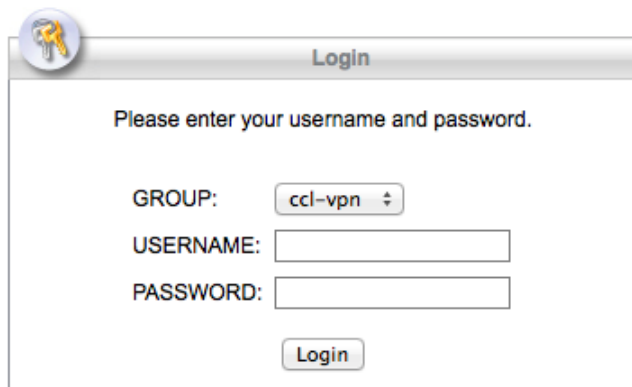
## VPN & Remote Access Setup – macOS

### Part 1. Installing the VPN software

1. Navigate to **https://vpn.ccl.com.au** in your web browser.



2. Enter your VPN credentials and press **Login**. Please note that your VPN credentials may be the same as your CCL network credentials.



3. After successfully logging in you will see a download page. Click on **Download for macOS** to start downloading the installer.

### Download & Install

[Download](#)

[Automatic Provisioning](#)

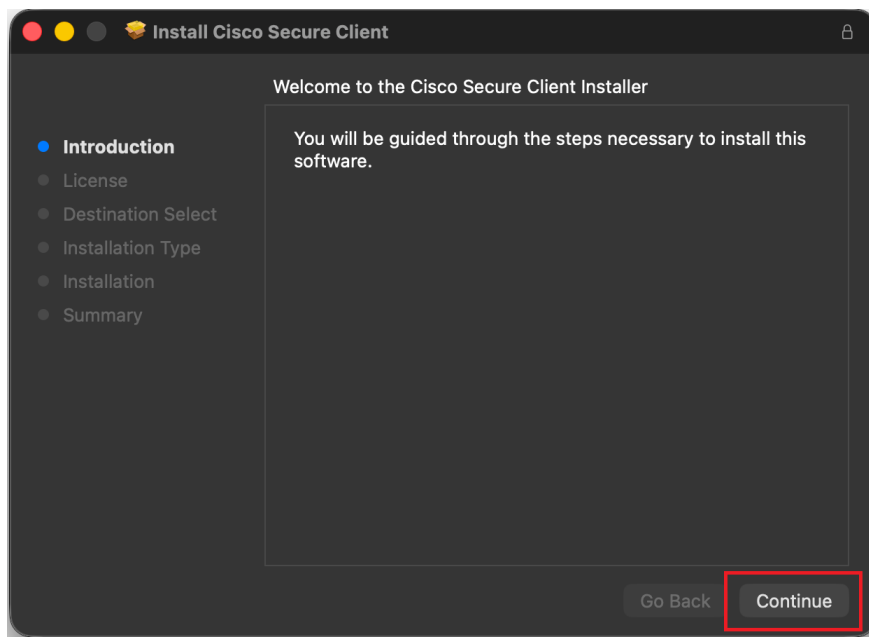
Download Cisco AnyConnect Secure Mobility Client and install it on your computer.

[Download for macOS](#)

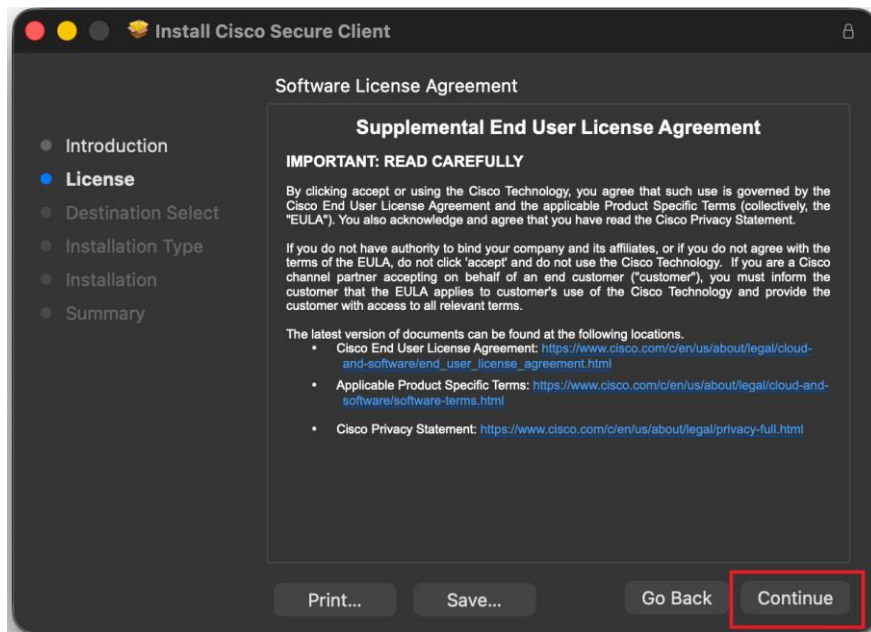
4. Open the installer and then run the **.pkg** file to start the installation process.



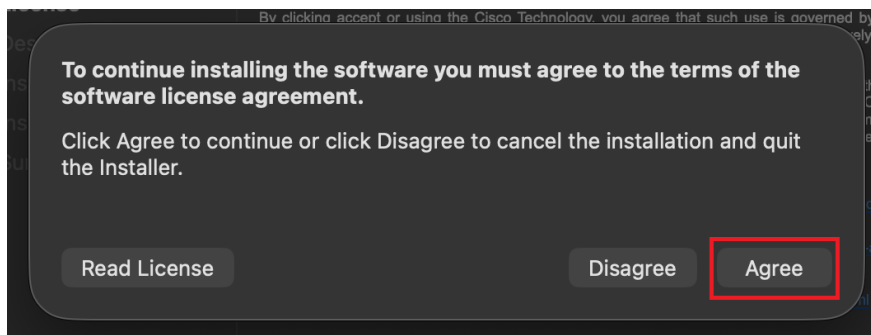
5. Press **Continue** to start the installation process.



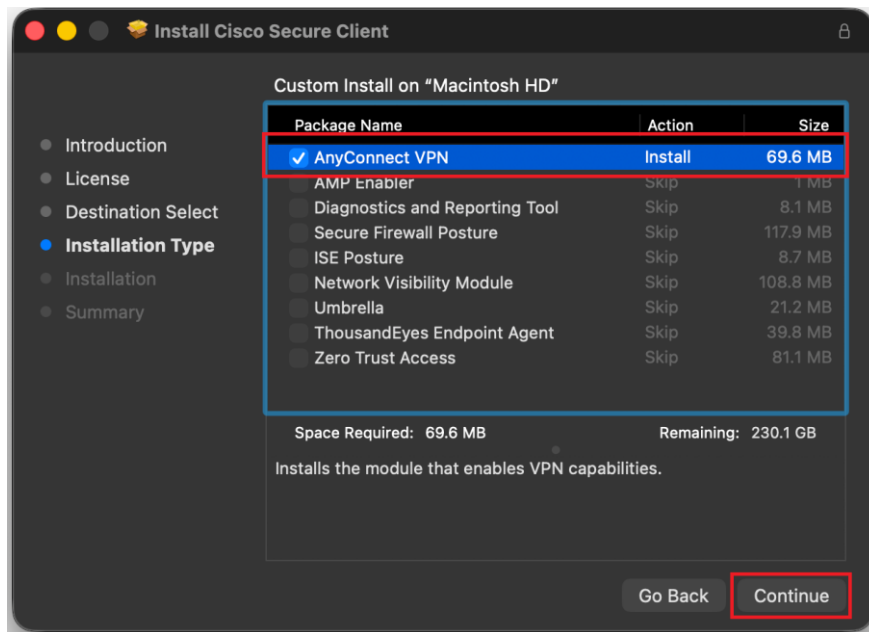
6. Press **Continue** to continue the installation process.



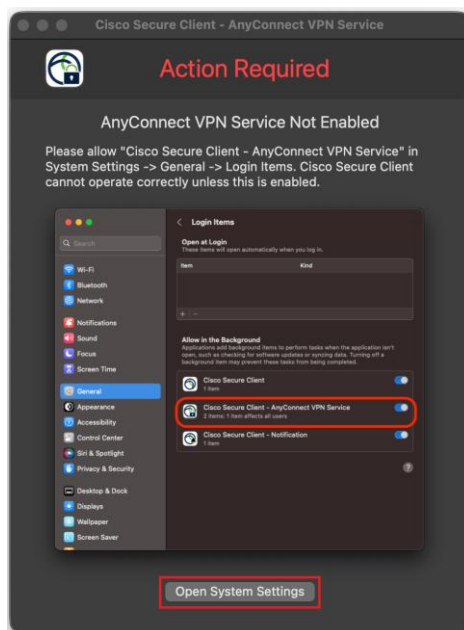
7. Press **Agree** to accept the Software License Agreement and continue with the installation process.



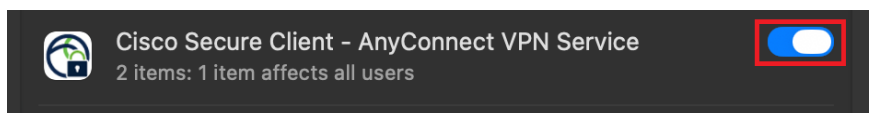
8. **Unselect** all options besides **AnyConnect VPN** and press **Continue** to continue the installation process.



9. During the installation process an Action Required window like the one below will appear.
  - a. Press **Open System Settings**



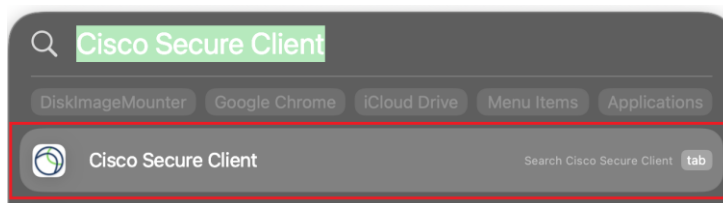
- b. Ensure **Cisco Secure Client – AnyConnect VPN Service** is **enabled**



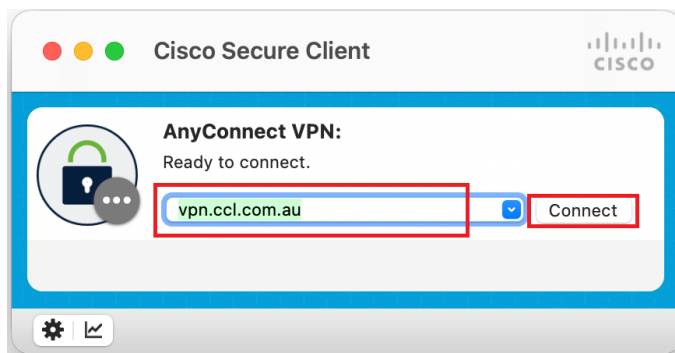
10. The installation has now been completed. Press **Close** and follow the instructions in **Part 2** to connect to the VPN.

## Part 2. Connecting to the VPN

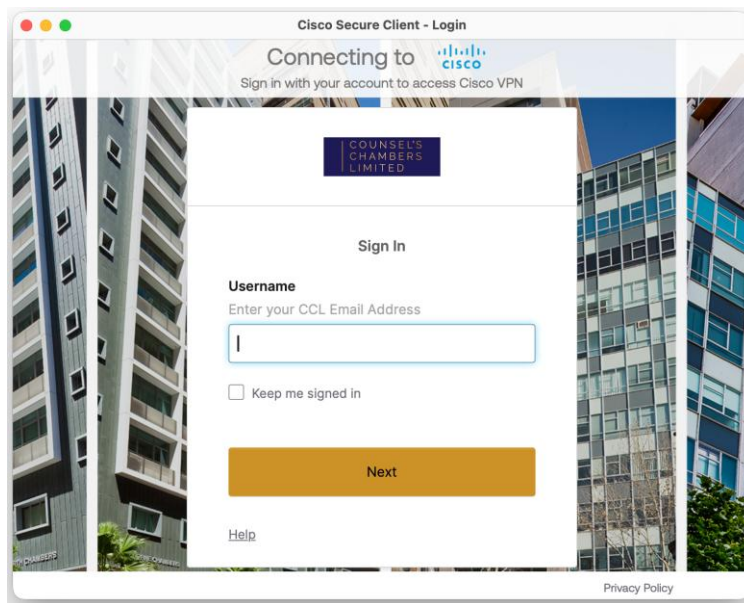
1. Start by searching for "Cisco Secure Client" in the Spotlight search bar and click on the entry named **Cisco Secure Client** to open the software.



2. Type **vpn.ccl.com.au** in the box and then press **Connect** as seen below.



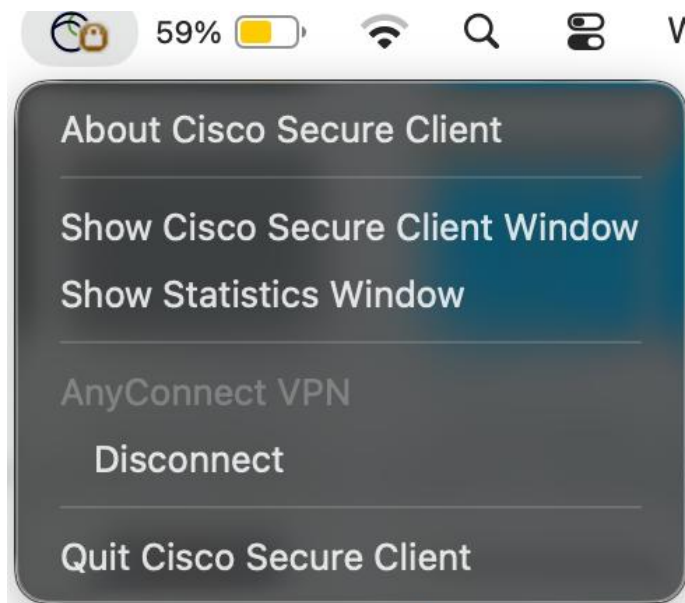
3. Enter your VPN credentials and sign in. Please note that your VPN credentials may be the same as your CCL network credentials.



4. Upon successfully logging in you will see a gold padlock icon on the top menu bar.



Clicking on the Gold Lock will display



# Part 3. Remote Computer Access

After logging into the VPN, you can now remotely access your computer. Below are instructions for accessing Windows and Mac computers remotely.

**i** Please note that CCL can only assist you with the VPN connection (Part 2). You will need to contact an IT consultant to assist you with configuring and troubleshooting Remote Computer Access.

## 3.1 Connecting to a **Windows** computer

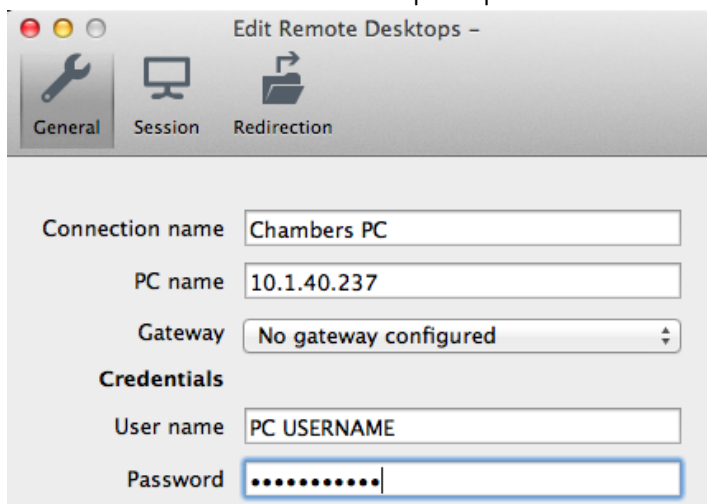
1. Search for the **Microsoft Remote Desktop** app in the App Store and then press **Install App**.



2. Once the app has been installed, open it and press the **New (+)** icon.



3. Enter the following details and leave the other options as default:
  - **Connection name:** Chambers PC
  - **PC name:** The IP address supplied by CCL
  - **User name:** Chambers computer username
    - *Note: For Exchange users your username will be in the format of:*  
*CHAMBERS\<username> e.g. CHAMBERS\jsmith*
  - **Password:** Chambers computer password



**Note:** Press the 'red x' icon to save and exit out of the window.

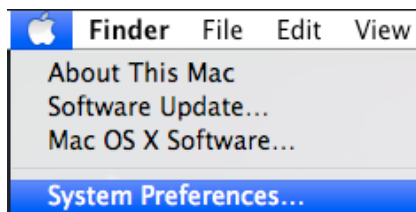
4. While connected to the VPN (see **Part 2**) you can double-click on the **Chambers PC** entry to initiate a remote desktop connection.



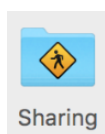
If the login is successful you will see your Chambers computer screen.

### 3.2 Connecting to a **macOS** computer

1. First you will need to disable sleep mode on the computer **in Chambers**. To do this go to **System Preferences** and then click on **Energy Saver**, and untick "Enable Power Nap" and "Prevent computer from sleeping automatically...".
2. You will need to enable Screen Sharing on the Mac computer **in Chambers**. To do this click on the Apple logo and select **System Preferences**.

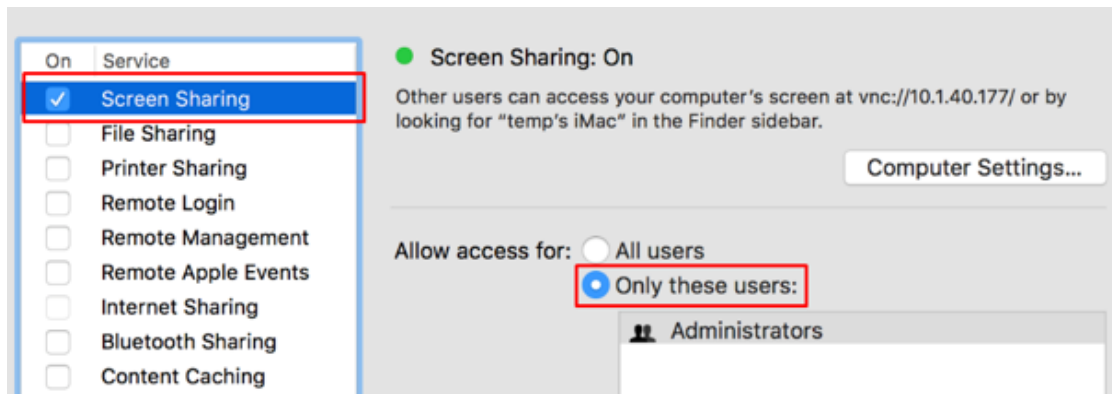


3. Click on **Sharing**.

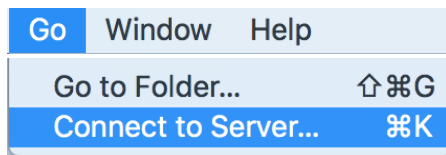


4. Tick the box next to **Screen Sharing** to enable the feature. Please ensure that "Only these users" is selected to prevent unauthorised access to your computer.

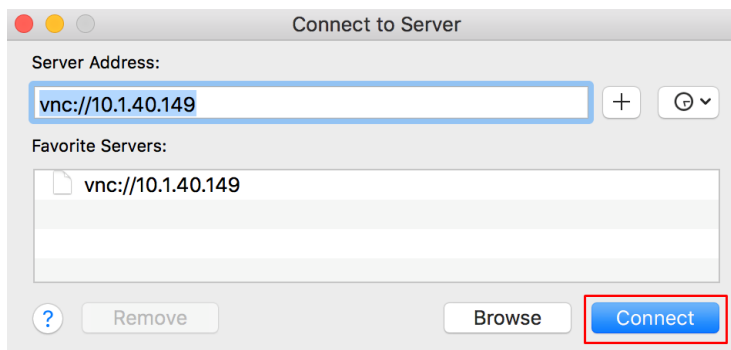




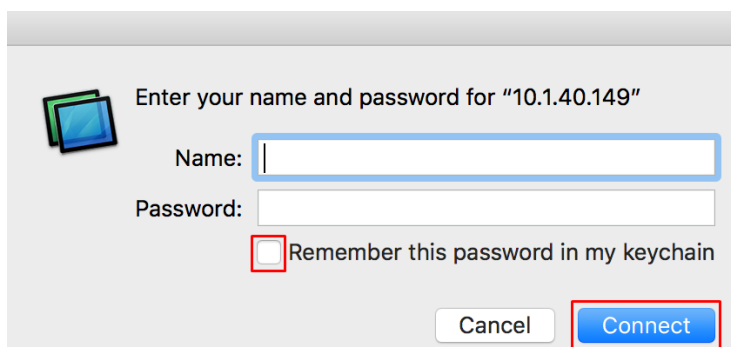
- Now that screen sharing is enabled, you can remotely connect to the computer. On the **remote** computer (i.e. computer at home) click on the **Go** menu and then **Connect to Server**.



- Type **vnc://<IP Address>** in the box using the IP address supplied by CCL, and then press **Connect**.



- Enter the username and password for the computer in Chambers and press **Connect**.



If the login is successful you will see your Chambers computer screen.