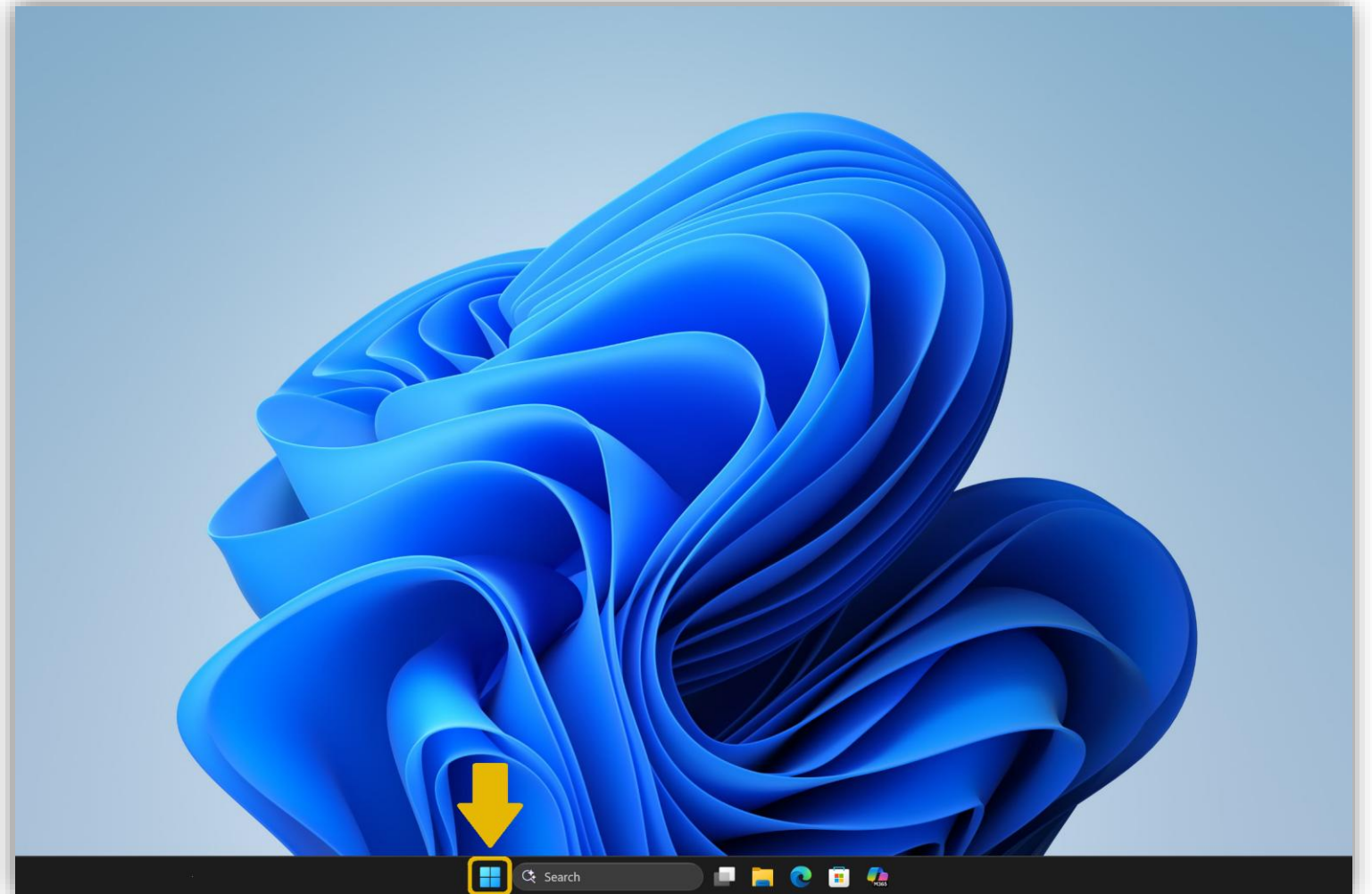


# Configuring Network Access: Windows Wired

COUNSEL'S  
CHAMBERS  
LIMITED

# Step 1 – Configuring Network Access: Windows Wired

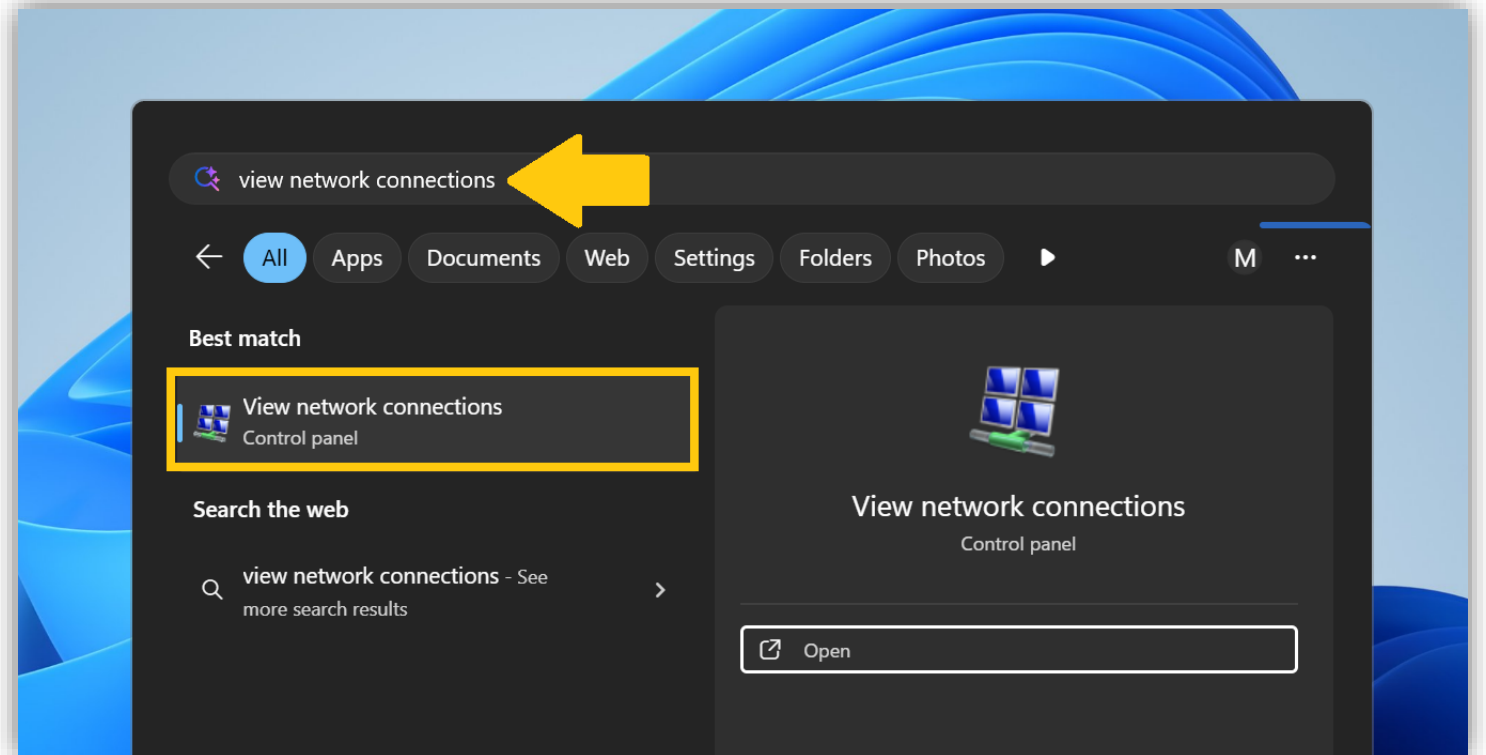
Click the Windows icon located  
in your desktop taskbar



# Step 2 – Configuring Network Access: Windows Wired

In the top search bar, type *view network connections*

A *View network connections* option will appear, Click **Open**

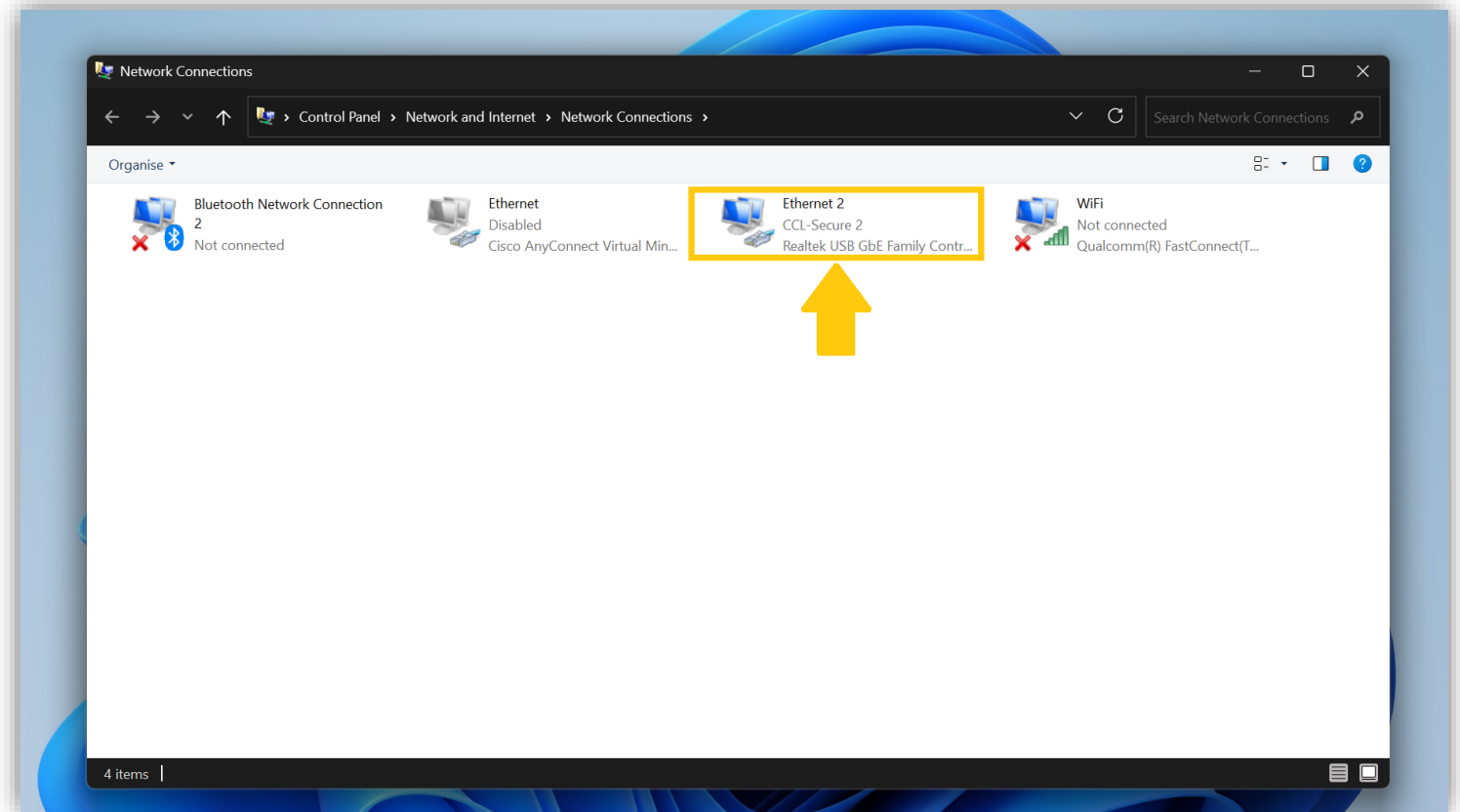


# Step 3 – Configuring Network Access: Windows Wired

Your PC's network connections will be displayed. Locate your ethernet connection that is active.

You can identify your active ethernet connection as a connection **NOT** in one of the following states:

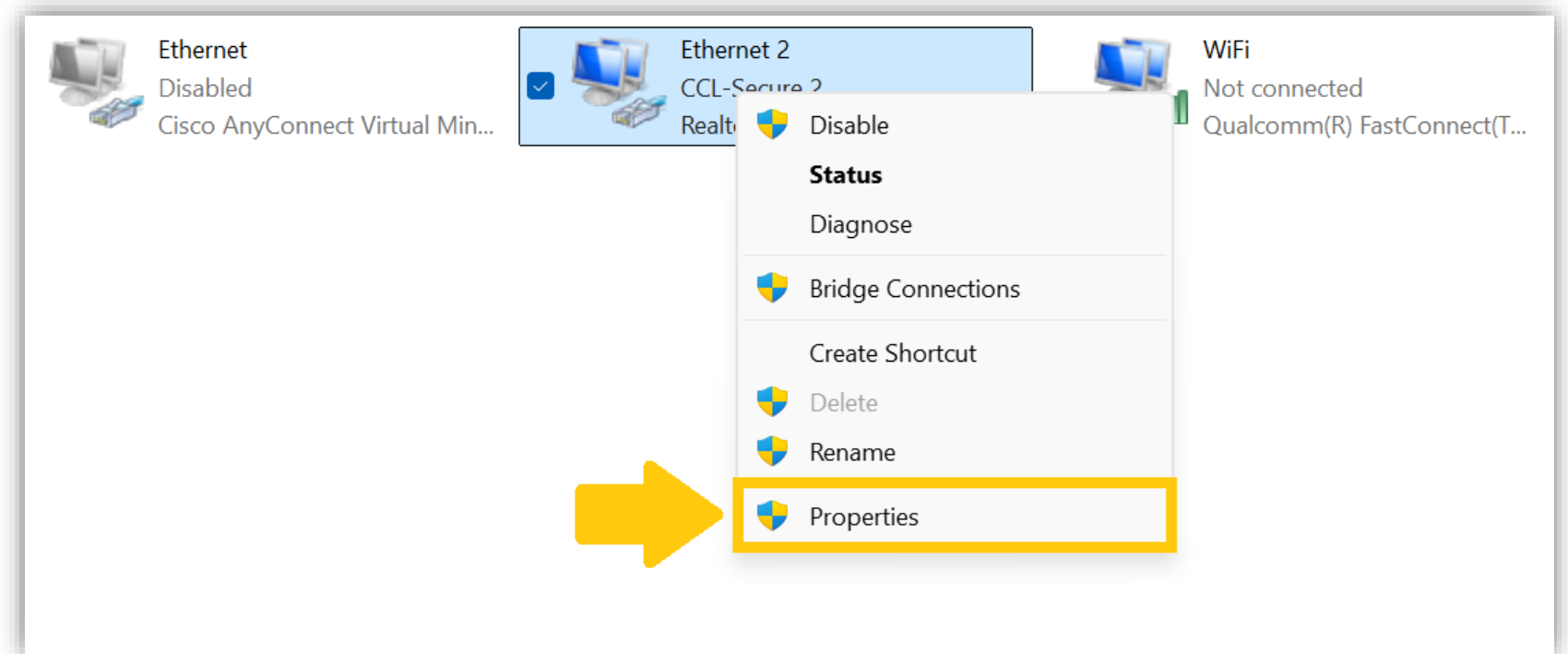
- ***Not connected***
- ***Disabled***



# Step 4 – Configuring Network Access: Windows Wired

Right-click your active ethernet connection.

Select ***Properties***



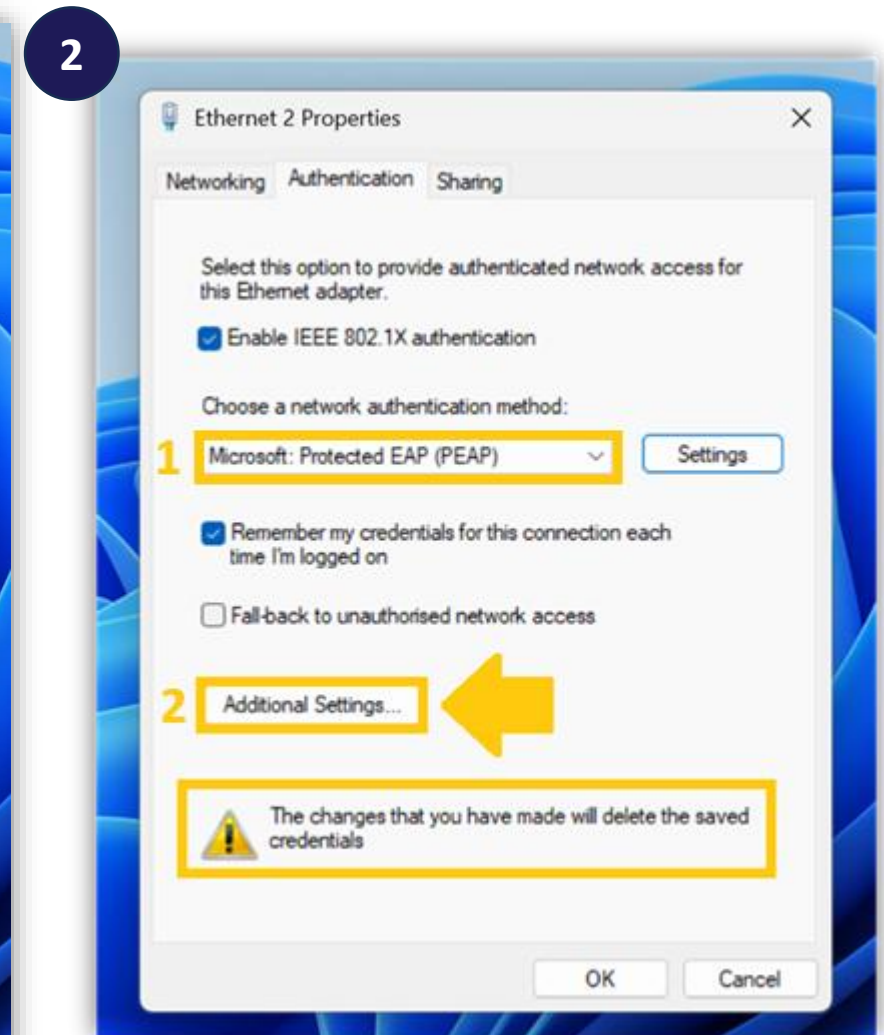
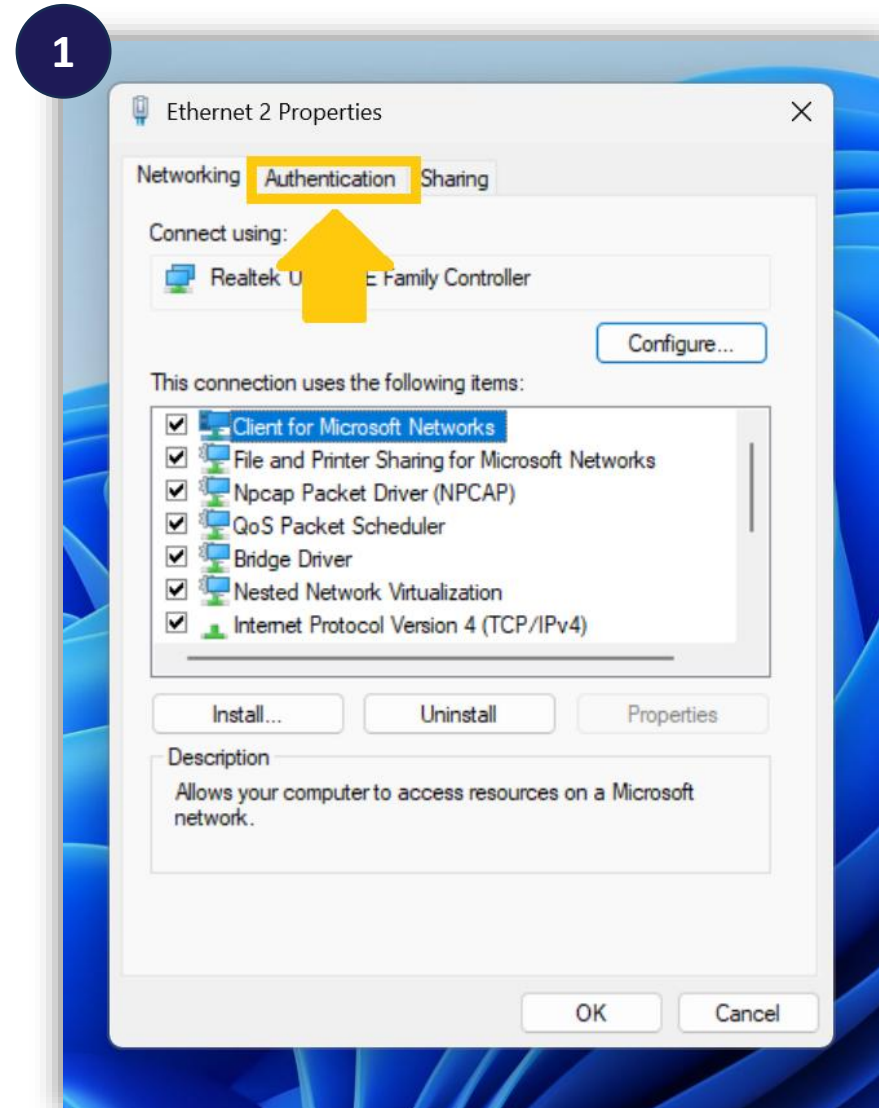
# Step 5 – Configuring Network Access: Windows Wired

An *Ethernet Properties* window will appear.

Select the **Authentication** tab.

Select **Microsoft: Protected EAP (PEAP)** in the *Choose a network authentication method* drop down.

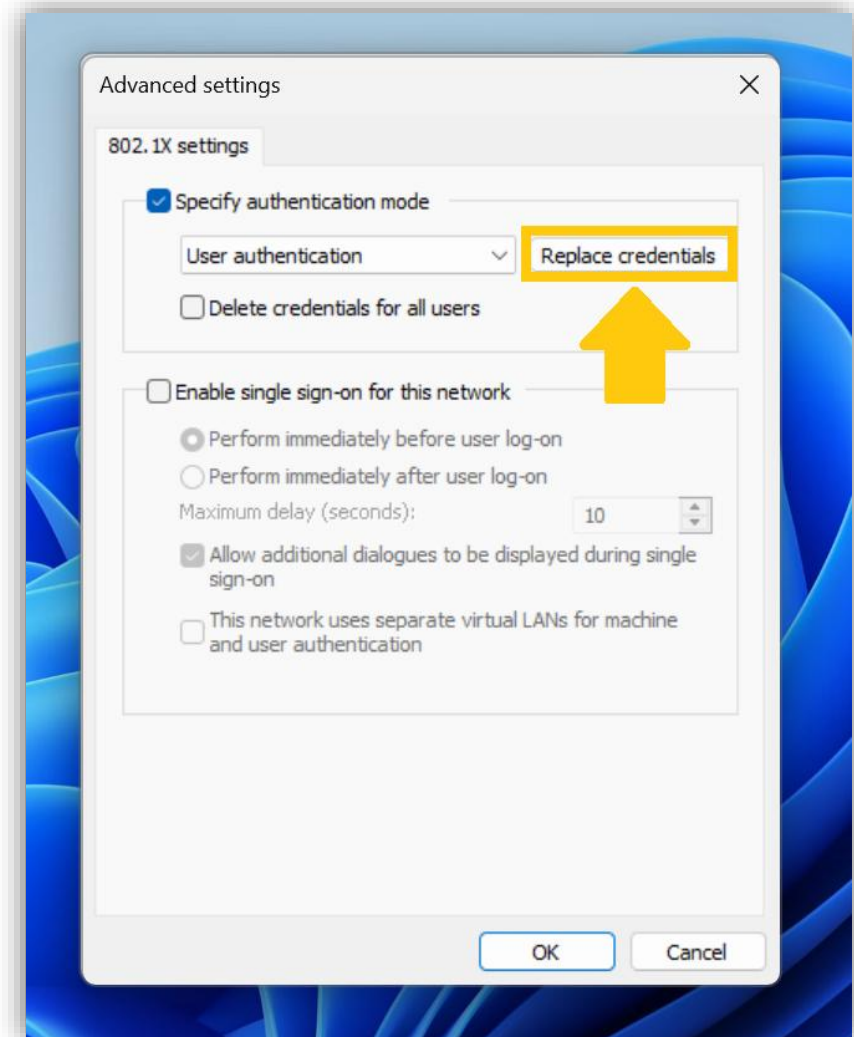
Select *Additional Settings*.



# Step 6 – Configuring Network Access: Windows Wired

The *Advanced Settings* window will appear.

Under the “*Specify authentication mode*” section, select **Replace credentials** or **Save Credentials**

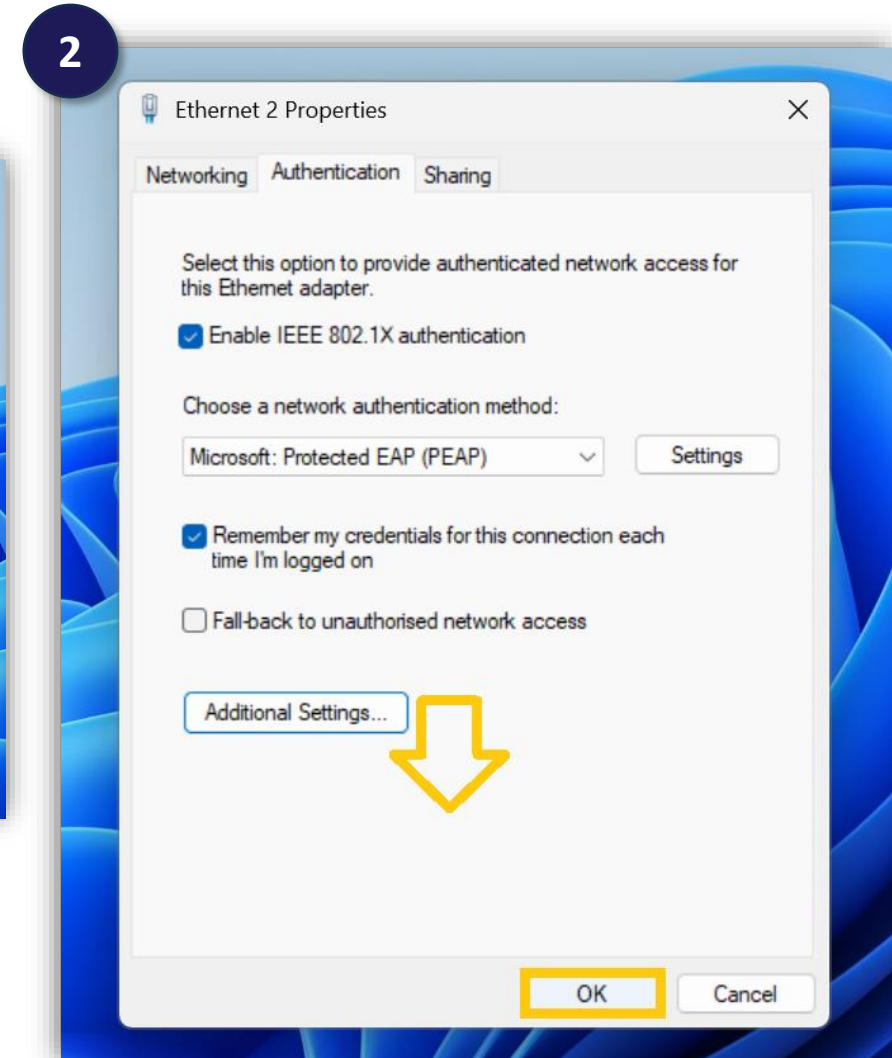
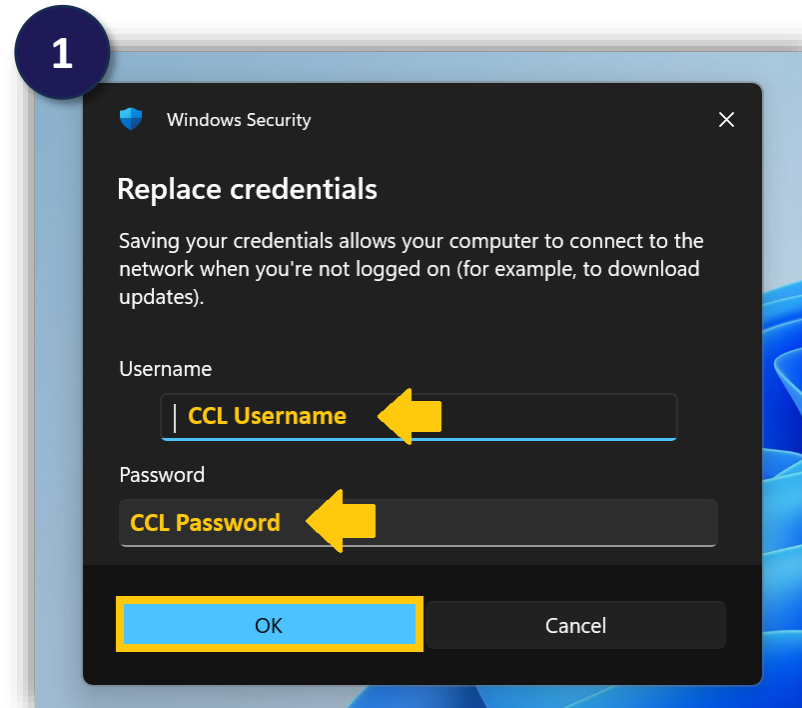


# Step 7 – Configuring Network Access: Windows Wired

A *Windows Security* window will open.

Enter your **CCL Username** and **CCL Password**.

Once completed, click **Ok**. You will be taken back to the *Authentication* tab, click **Ok**.



# Step 8 – Configuring Network Access: Windows Wired

You will be taken back to the *Network Connection* window.

Your ethernet connection should now be connected.

