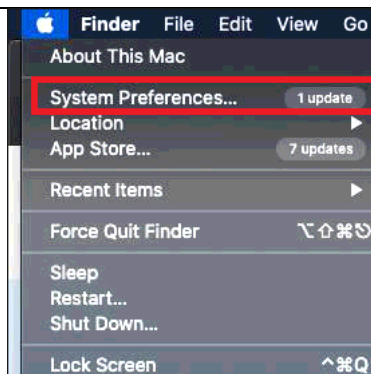


## Configuring a Device for MS-CHAPv2 – macOS Wired

**Important:** Before you proceed, as part of the set up for MS-CHAPv2, you will need your CCL Network username and password. If you are unsure of your username and password, you can verify or reset your password at [password.ccl.com.au](https://password.ccl.com.au), or if you require any further assistance regarding the instructions below, please contact CCL Support via email at [support@ccl.com.au](mailto:support@ccl.com.au).

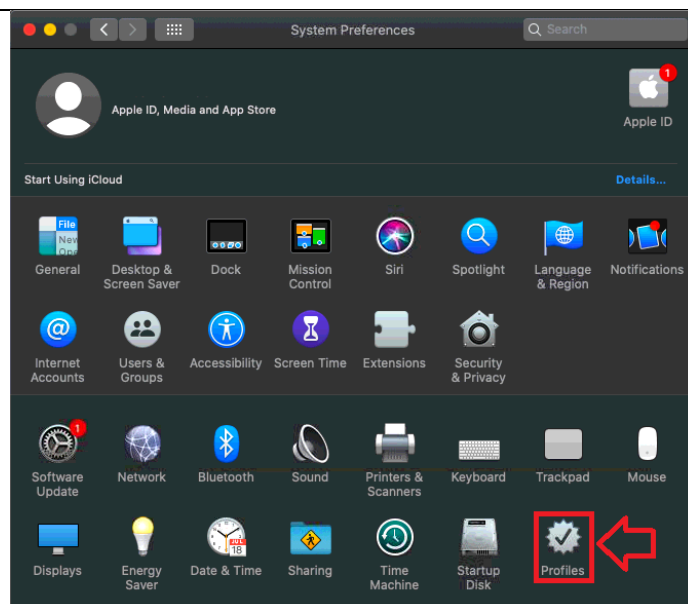
By following the steps outlined below, you will migrate macOS wired connections to the CCL network from certificate-based authentication to username and password-based authentication (MS-CHAPv2):

1. Click the Apple icon up the top left of your screen and select **System Preferences**.



2. A window will open titled *System Preferences*, select **Profiles**.

**PLEASE NOTE – If you do not see this option listed, your device is already configured correctly. You DO NOT need to follow these instructions.**

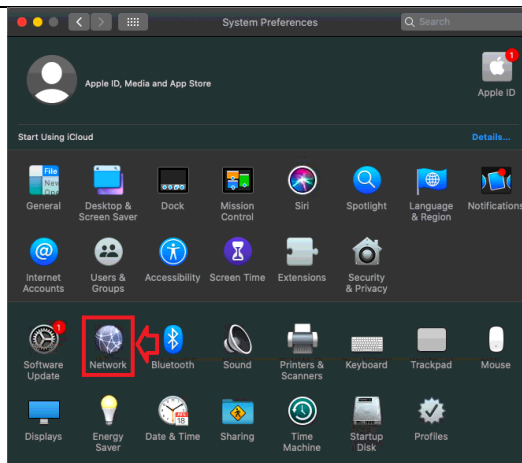


3. A window will open titled *Profiles*. Locate and select the option under *User Profiles* titled **CCL\_OSX\_Wired**, then, click the small **minus** symbol down the bottom left corner of the window.

You will be asked to put in a password, this is the password you use to unlock your computer, not your CCL Network Password.



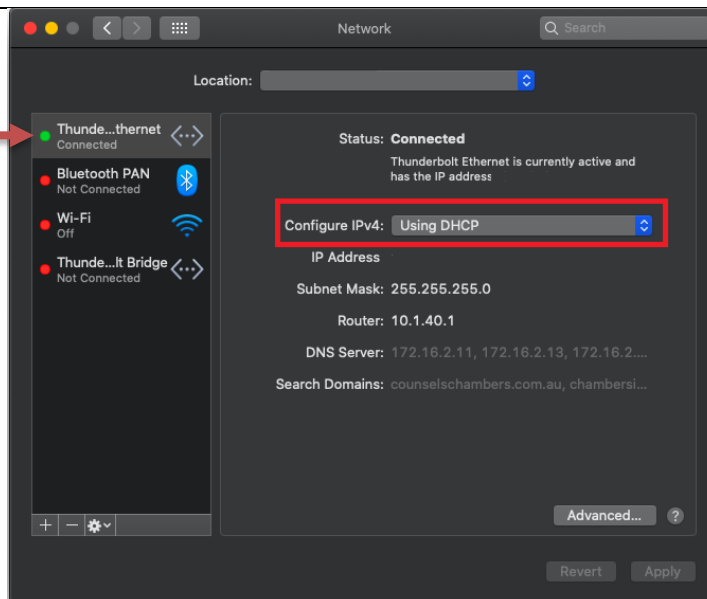
4. Head back out to the *System Preferences* window, and now select **Network**.



5. In the *Network* window, in the left-hand panel, select your computers ethernet adapter (this will be indicated as *Connected*). Next to the option *Configure IPv4*, switch the setting to **Off**, then click **Apply** down the bottom right hand corner of the window.

Once applied, switch the setting back to **Using DHCP**, then click **Apply** again.

Note – If this setting is set to **Using DHCP with Manual Addressing**, when switched

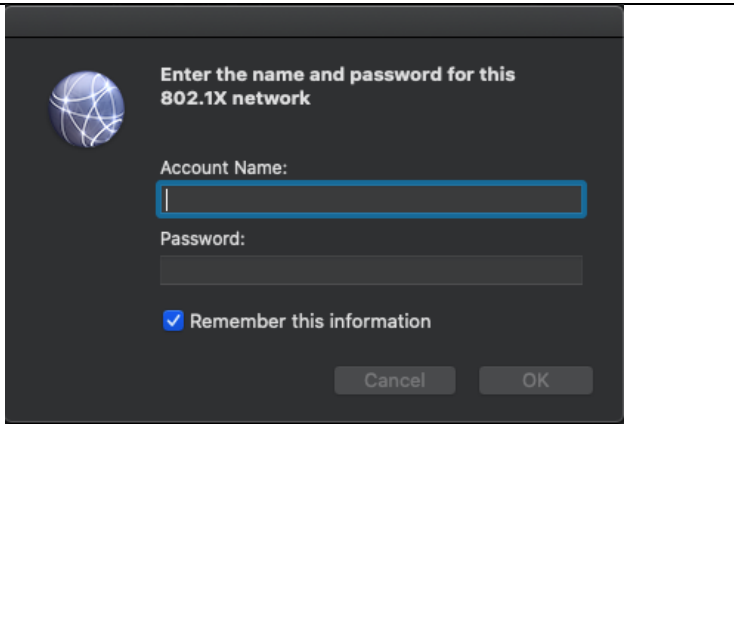


off, switch back to **Using DHCP with Manual Addressing.**

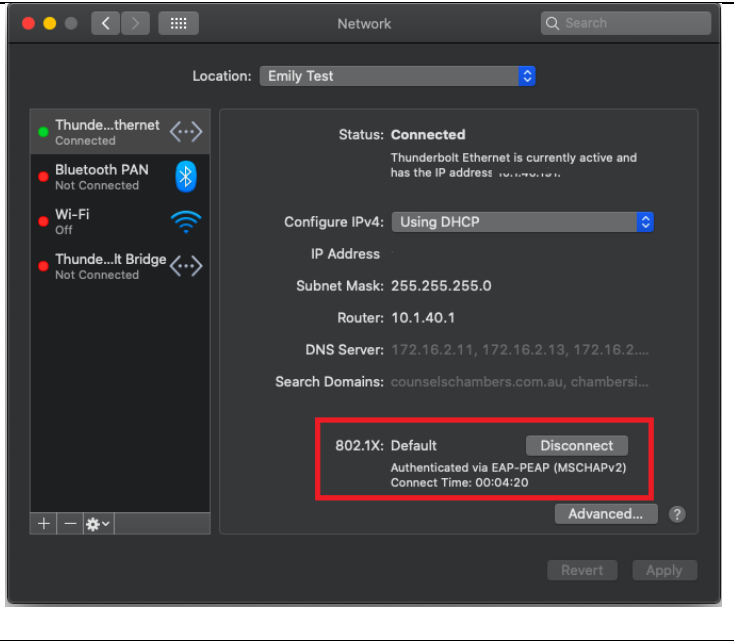
6. A window will open asking for an *Account Name* and *Password*. Enter your CCL Network Username and Password. Tick *Remember this information*.

Press **OK**.

**PLEASE NOTE – If after changing the above settings, the box in step 6 does not appear, please disconnect your ethernet cable and reconnect it.**



7. If your CCL Username and Password have been entered correctly, a prompt will appear at the bottom of the window as pictured.



Please verify that your internet connection is working. If it is, You are now successfully connected to the CCL Network via MS-CHAPv2.